



pro**harvest**<sup>™</sup>  
by OutBack Power

## Gen XL Inverter Series

10KW 480V MODEL

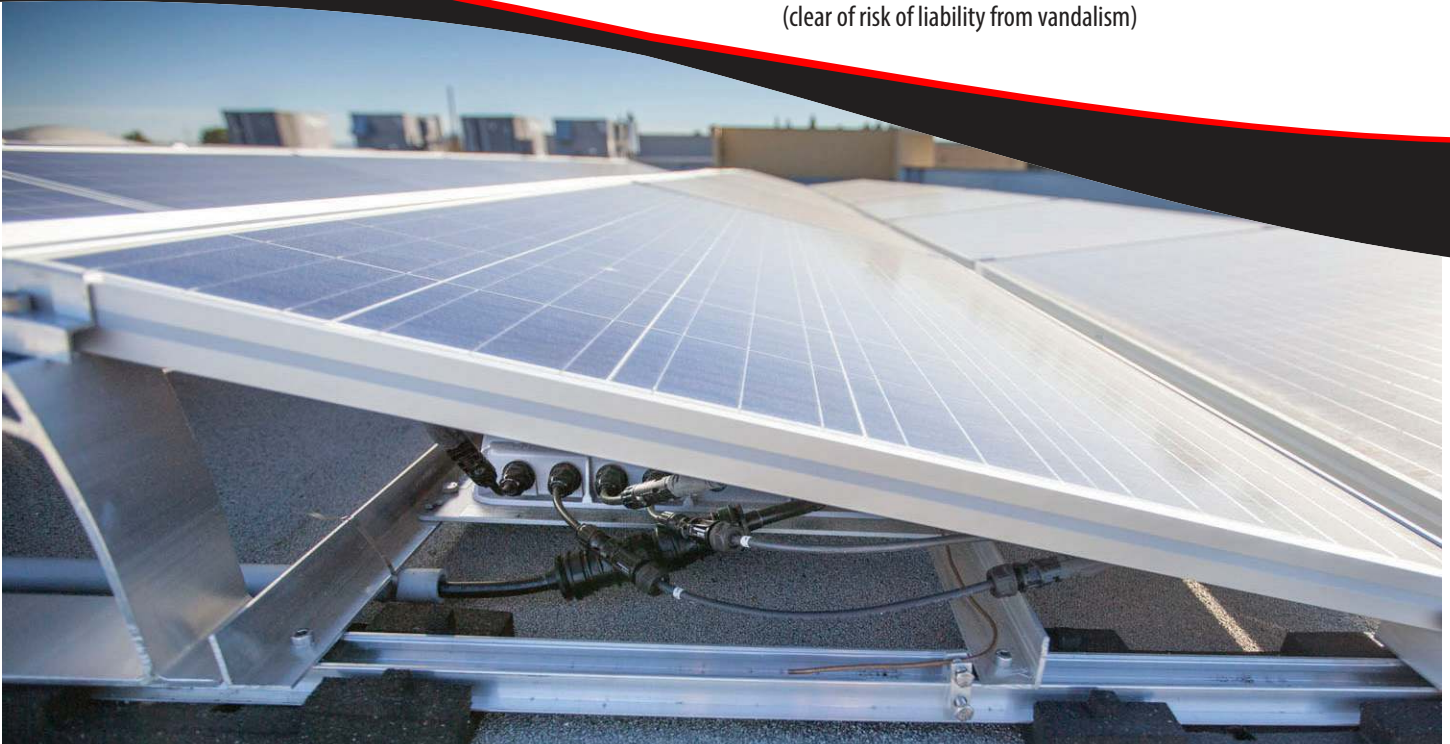


### Features

- Rugged 3-phase 480V plug & play system
- Small and light (hand holdable, 30.6 lb.)
- Non-isolated inverter for use with ungrounded DC systems
- Peak 98.2% efficiency, CEC efficiency of 97.5%
- 200-850VDC MPP voltage range for 600V and 1,000V systems
- 10kW AC full power MPP voltage range 450-850V
- Two DC string inputs with independent monitoring and MPPT management.
- Waterproof NEMA6, silent convection cooling
- Designed for high reliability, uses no electrolytic capacitors
- Wide temperature range, -40 to +65°C
- Utility-Interactive; Listed to UL 1741 SA
- Compliant with UL1699B arc detection

### Applications

- **Rooftop commercial:** usable where other solutions just won't work such as coastal, desert and high altitude locations
- **Car ports, parking and shade structures:** can be mounted at any orientation, under modules, on racking without extra strengthening (clear of risk of liability from vandalism)



DC Input (2 MPPT Inputs)	PHXL480-10K
<b>Max. Open Circuit Voltage</b> (per string)	1,000VDC
<b>Full Power MPPT Range</b> (per string)	450-850VDC
<b>PV Start Voltage</b>	200VDC
<b>DC Allowable Stacking Ratio</b> (total, 2 inputs combined)	Must not exceed 4.0 under any circumstances
<b>DC Maximum Input</b>	<b>Current</b> (per DC input): 12A <b>Short circuit current:</b> 30A <b>Source back feed current to input source:</b> 0A
<b>DC Maximum Input</b>	The DC connector has been evaluated and approved by UL for use as the load-break disconnect required by the NEC2.

\*On the DC side of the inverter, each input limits at 6 kW and/or 12A, and the combined total AC output is limited to 9.975 kW. Higher DC STC string powers may be applied, the inverter will limit as described above. Total stacking for inverter must not exceed 4.0 under any circumstances

AC Output	PHXL480-10K				
<b>AC Maximum</b>	<b>Continuous total output power</b> (to 40°C): 9.975kW <b>Continuous output current</b> (per phase): 12A <b>Output over current protection:</b> 80A				
<b>AC Derate</b> (40-65°C)	-175W per °C				
<b>AC Nominal Output Current</b> (per phase)	12A				
<b>AC Three-Phase System Compatibility</b>	480V Wye, three phases, neutral and ground				
<b>AC Voltage Range</b> (limits adjustable)	<table border="0" style="width: 100%;"> <tr> <td style="width: 60%;"><b>Phase to Phase</b></td> <td><b>Phase to Neutral</b></td> </tr> <tr> <td>Minimum: 442V    Nominal: 480V    Maximum: 528V</td> <td>Minimum: 244V    Nominal: 277V    Maximum: 305V</td> </tr> </table>	<b>Phase to Phase</b>	<b>Phase to Neutral</b>	Minimum: 442V    Nominal: 480V    Maximum: 528V	Minimum: 244V    Nominal: 277V    Maximum: 305V
<b>Phase to Phase</b>	<b>Phase to Neutral</b>				
Minimum: 442V    Nominal: 480V    Maximum: 528V	Minimum: 244V    Nominal: 277V    Maximum: 305V				
<b>AC Output Frequency Range</b> (limits adjustable)	Minimum: 58.3Hz    Nominal: 60Hz    Maximum: 62Hz				
<b>Power Factor</b>	≥0.99 (settable from 0.8 leading to 0.8 lagging)				
<b>AC Reconnect Delay</b>	<b>Default:</b> 5min <b>Adjustment:</b> 1s to 16min				
<b>AC Synchronization In-Rush Current</b>	0A				
<b>Maximum Output Fault Current and Duration</b>	12A, <0.1ms				
<b>AC Minimum Wire Gauge</b> (for grid connection)	14AWG				
<b>AC Disconnect Means</b>	AC connector has been evaluated and approved by UL for use as the load-break disconnect required by the NEC (NEC section 690.17, allowed by the exception of meeting requirements specified in 690.33)				

Other Specifications	PHXL480-10K
<b>Efficiency</b>	<b>Peak:</b> 98.2% <b>CEC:</b> 97.5%
<b>Dimensions H x W x D</b> (mm/in)	515 x 378 x 86 / 20.25 x 14.9 x 3.4
<b>Weight</b> (kg/lb)	13.6 / 30.6
<b>Operating Temperature Range</b> (°C/°F)	-40 to +65 / -40 to 150
<b>Power Consumption</b>	<b>Standby:</b> <8.3W <b>Night:</b> <8.3W
<b>Cooling</b>	Natural convection, no fan
<b>Communication</b>	Powerline or Modbus/RS485
<b>Environmental Rating</b>	Outdoor/rooftop, NEMA 6
<b>Certifications</b>	CA Rule 21 (UL1741-SA), UL1741/IEE1547, UL1699B, CAN/CSA C22.2 NO. 107.1, FCC Part 15 Part A. Meets the requirements of NEC 690.11
<b>Warranty</b>	10-year