

Advanced diagnostics for solar and battery systems

Conext™ ComBox

Schneider Electric brings a powerful analytic solution to monitor residential and off-grid solar installation performance, making life simpler for installers and system owners.

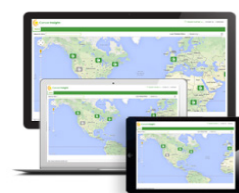


Solution at a glance

Conext ComBox is a true System Manager for your battery based solar installation allowing you to visualize, monitor and control.

- **Cost effective:** monitor solar system performance to ensure optimal returns and uptime.
- **Flexible:** multiple visualization options for trends and analysis as well as custom data logging for diagnostics.
- **Connected:** have your system performance data at your fingertips through emails alerts and portal access.
- **Scalable:** for large multi-cluster systems, the Conext ComBox can be setup in a master-slave configuration to monitor multiple separate Xanbus networks and supported Modbus devices, such as power meters.
- **Simple and powerful:** change or configure the settings of Conext Xanbus devices through the user-interface. Modbus interface on ComBox allows you to link Conext devices with third-party systems for further diagnostic and control.

Conext ComBox easily connects with **Conext Insight** to enable you to remotely monitor a portfolio of sites from any web-connected device.



Conext Insight



Conext ComBox
Tablet App

Homeowners can reap maximum benefits from their battery based solar installation by keeping realtime track of system performance using the **Android Tablet App**.

Conext ComBox can be coupled with **Conext RL** grid-tie inverters to enable zero export in regions where homeowners have no incentives to sell PV energy to the grid.

Technical Specifications

Conext ComBox

| Device short name | Conext ComBox |
|---|---|
| Electrical specifications | |
| Communication interfaces | |
| Xanbus | Connector: 2 x RJ45 Products Supported: Conext™ XW+, SW, MPPT 60-150, MPPT 80-600, AGS, SCR, Battery monitor |
| Ethernet | Connector: 1 x RJ45, 10 / 100 MBPS Server: FTP, Web, Modbus TCP/IP slave, SMTP, SNTP, Auto discovery: DPWS |
| RS485 | Modbus (1 x Connector: Screw 5-terminal, 16-24AWG, 2-wire serial, 19200 bps) |
| Data Interfaces | |
| USB 2.0-Host | Connector: USB-A, Protocols: MSD (firmware upgrades and device locator) |
| USB 2.0-Device | Connector: USB-mini B, Protocols: MSD (data extraction) |
| Power supply options | |
| DC input | Certified / Listed / CE, using a 6.5 mm power plug, 9 - 24 Vdc (universal multi-pin AC adapter included) |
| Power consumption | <2 W typical / 10 W peak |
| Xanbus | When connected to Conext™ XW+ or MPPT 80 600 |
| RS485 connector | 24 Vdc input(safety extra low-voltage only) |
| Memory | |
| Internal | 96 MB flash |
| External | Micro-SD Card (2GB or more, class 2 or better recommended) |
| Conext ComBox Android tablet application* | |
| Software | Minimum Android version 4.0 (Ice Cream Sandwich), download via Google Play |
| Hardware | Minimum tablet screen size (7", 1024 x 600, e.g. Acer Iconia Tab A100, Acer Iconia Tab A500, Google Nexus™ 7, Asus Transformer TF700T, Samsung Galaxy Tab*2 10.1) |
| General specifications | |
| Weight | 0.25 kg (0.55 lb) |
| Dimensions (H x W x D) | 11.4 x 16.9 x 5.4 cm (4.5 x 6.7 x 2.1 in) |
| Housing/mounting system | ABS Plastic / DIN-rail: 35 mm, Wall-mount: 2-screw |
| IP rating/mounting Location | IP 20, NEMA 1, Indoor only |
| Status display | 5 x LEDs |
| Temperature | Operating: -4 to 122 °F (-20 to 50 °C) / storage: -40 to 185 °F (-40 to 85 °C) |
| Humidity | Operating: < 95%, non-condensing / storage: < 95% |
| Part number | 865-1058 |
| Features | |
| Programmable dry contact relay | Screw 3-terminal, 16-24 AWG, NC-Com-NO, Form: Class 2, 24 Vdc 4 A max |
| Graphical user interface | Internet Browser, Android tablet app |
| Remote firmware upgrades | Yes (ComBox and connected Xanbus devices) |
| Custom datalogger | Yes (requires Micro-SD card) |
| Warranty | 5 years |
| Number of Xanbus devices | Up to 20 (depending on device type) |
| Regulatory approvals | |
| Marking | CE, RCM |
| EMC immunity | EN61000-6-1 residential / commercial |
| EMC emission | EN61000-6-3, FCC Part 15 Class B, Ind. Canada ICES-003 Class B |
| Substances/environmental | RoHS |

Specifications are subject to change without notice. *Tablet not included

Conext ComBox communication device works with the following Schneider Electric products



Conext XW inverter/charger
XW 5548 NA Product no. 865-5548-01
XW 6848 NA Product no. 865-6848-01
XW 7048 E Product no. 865-7048-61
XW 8548 E Product no. 865-8548-61



Conext SW inverter/charger
SW 2524 120 Product no. 865-2024
SW 4024 120 Product no. 865-3524
SW 2524 230 Product no. 865-2524-61
SW 4024 230 Product no. 865-4024-61



Conext MPPT 60 150 solar charge controller
Product no. 865-1030-1



Conext MPPT 80 600 solar charge controller
Product no. 865-1032



System Control Panel (SCP)
Product no. 865-1050-01



Automatic Generator Start (AGS)
Product no. 865-1060-01



Conext Battery Monitor
Product no. 865-1080-01



Conext RL 3000/4000/5000 E/ E-S
3000 Product no. PVSNVC3000/3000S
4000 Product no. PVSNVC4000/4000S
5000 Product no. PVSNVC5000/5000S



Conext Insight