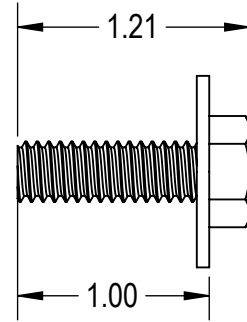
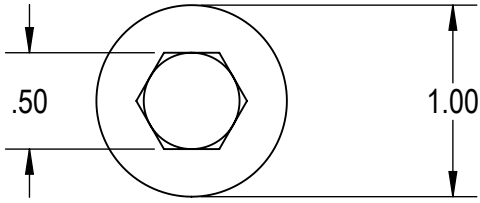


| ITEM NO | DESCRIPTION                                | QTY IN KIT |
|---------|--|------------|
| 1       | CAP SCREW, 5/16" X 1" W/ 1" CAPTIVE WASHER | 1          |
| 2       | WASHER, EPDM BACKED                        | 1          |
| 3       | POST, 1-1/4" X 6-1/2"                      | 1          |
| 4       | QBASE, 1-1/4"                              | 1          |
| 5       | CAP SCREW, HEX HEAD, 5/16" X 3/4"          | 1          |

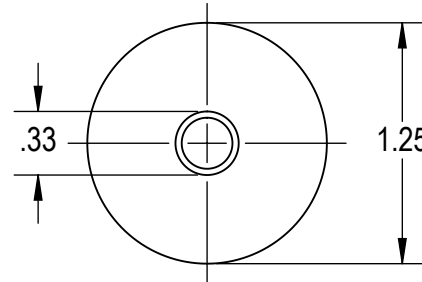
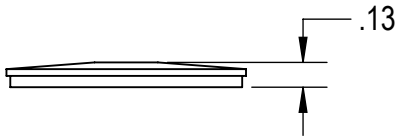
| PART NUMBER    | DESCRIPTION                                     | MOUNT HEIGHT |
|----------------|---|--------------|
| QM-QBB-01-M1   | Qbase Base (incl. base to post h/w), Mill       | na           |
| QM-QBP-3.25-M1 | Qbase 3.25" Post (incl. post to rack h/w), Mill | 3.75"        |
| QM-QBP-4.5-M1  | Qbase 4.5" Post (incl. post to rack h/w), Mill  | 5"           |
| QM-QBP-6.5-M1  | Qbase 6.5" Post (incl. post to rack h/w), Mill  | 7"           |
| QM-QBP-8.5-M1  | Qbase 8.5" Post (incl. post to rack h/w), Mill  | 9"           |
| QM-QBP-11.5-M1 | Qbase 11.5" Post (incl. post to rack h/w), Mill | 12"          |
| QM-QBP-12.5-M1 | Qbase 12.5" Post (incl. post to rack h/w), Mill | 13"          |
| QM-QBP-14.5-M1 | Qbase 14.5" Post (incl. post to rack h/w), Mill | 15"          |
| QM-QBP-17.5-M1 | Qbase 17.5" Post (incl. post to rack h/w), Mill | 18"          |

1) CAP SCREW, 5/16" X 1" W/ 1" CAPTIVE WASHER



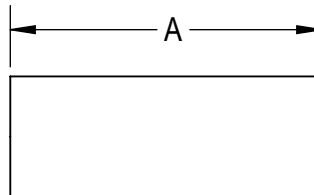
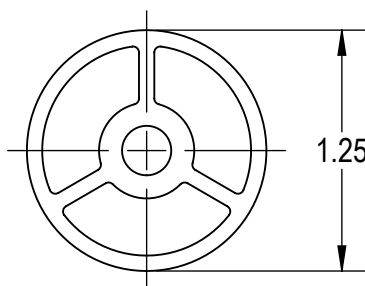
| Property | Value                      |
|----------|----------------------------|
| Material | 300 Series Stainless Steel |
| Finish   | Clear                      |

2) WASHER, EPDM BACKED



| Property | Value                      |
|----------|----------------------------|
| Material | 300 Series Stainless Steel |
| Finish   | Clear                      |

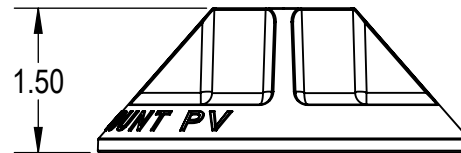
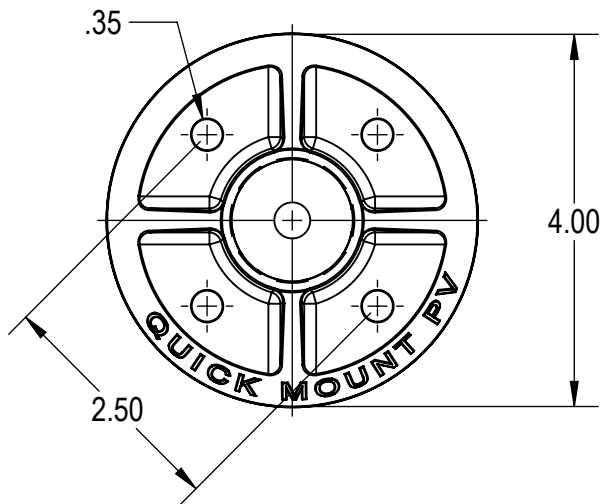
3) POST, 1-1/4" X A



A  
 POST LENGTHS AVAILABLE IN  
 THE FOLLOWING SIZES:  
 3.25", 4.5", 6.5", 8.5", 11.5",  
 12.5", 14.5", 17.5"

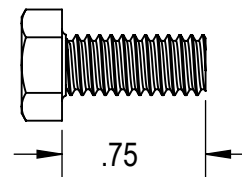
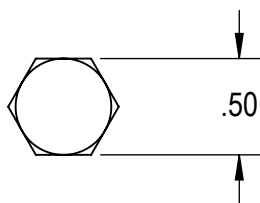
| Property | Value                |
|----------|----------------------|
| Material | 6000 Series Aluminum |
| Finish   | Mill                 |

4) QBASE, 1-1/4"



| Property | Value         |
|----------|---------------|
| Material | A360 Aluminum |
| Finish   | Mill          |

5) CAP SCREW, HEX HEAD, 5/16" X 3/4"



| Property | Value                      |
|----------|----------------------------|
| Material | 300 Series Stainless Steel |
| Finish   | Clear                      |