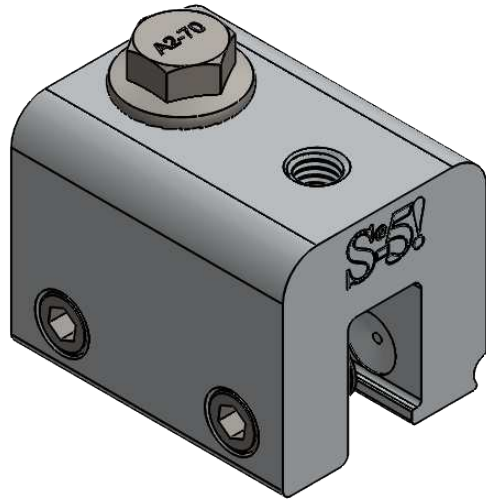
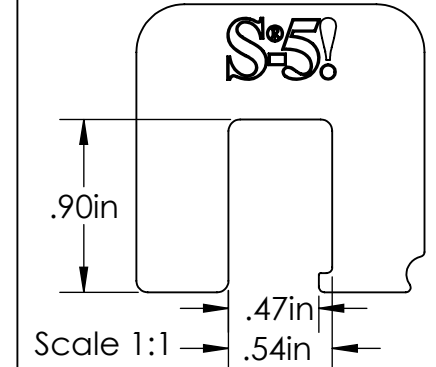
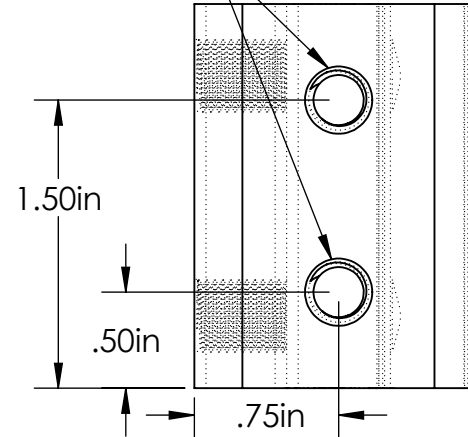


# S-5-V

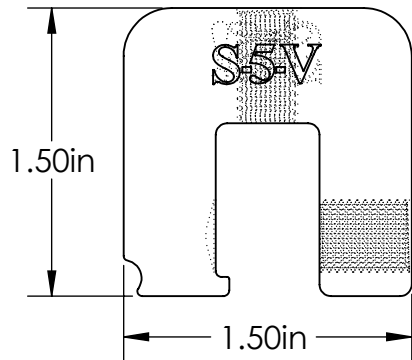


M8-1.25 Threaded Hole

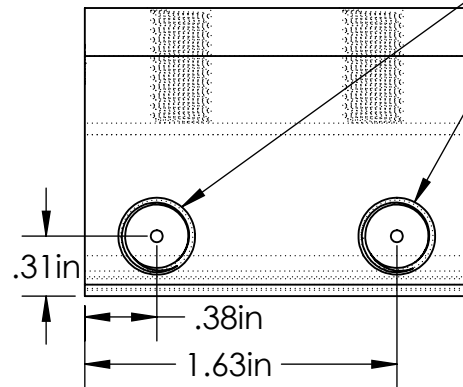
Top



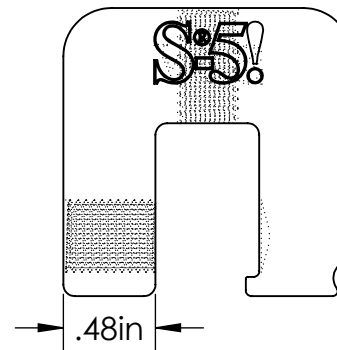
Back



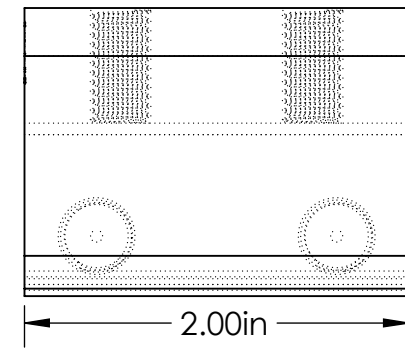
Left



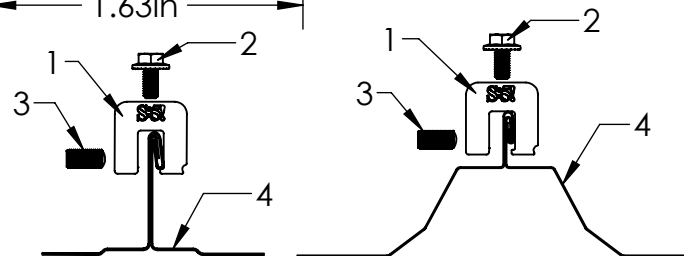
Front



Right



(2x) 3/8-24 Threaded Hole



## General Notes:

1. S-5-V Clamp
2. M8-1.25 SS Hex Flange Bolt (13mm Socket)
3. 3/8-24 SS Round Point Setscrew (3/16 Hex Drive)
4. Example roof

**FOR STANDING SEAM SPECIFIC MECHANICAL LOAD TEST INFORMATION AND CLAMP INSTALLATION INFORMATION PLEASE VISIT: [WWW.S-5.COM](http://WWW.S-5.COM)**

|   |   |                          |                   |
|---|---|--------------------------|-------------------|
| MATERIAL:<br>6061 T6 Al   | <div data-bbox="1599 1208 2166 1342">  <p><b>S-5!</b><br/>The Right Way!</p> </div> <div data-bbox="1915 1220 2139 1332"> <p>METAL ROOF INNOVATIONS, LTD.<br/>8655 TABLE BUTTE RD<br/>COLORADO SPRINGS, CO 80908<br/>719-495-0518<br/>719-495-0045(FAX)</p> </div> |                          |                   |
| EST ASSEMBLY WEIGHT:<br>0.382 lbs   | TITLE<br>S-5-V  |                          |                   |
| SUPPLIED HARDWARE:<br>M8-1.25 x 16 mm Bolt<br>(2x) 3/8-24 x .800" Setscrews                     | DRAWING NO.<br>V07-A-0-D  | DRAWN BY<br>Kati Kadakas | DATE<br>4/11/2016 |
| SCALE: 1:1<br><br>EST. WEIGHTS:<br>Clamp: 0.313 lbs<br>Setscrew: 0.0170 lbs<br>Bolt: 0.0345 lbs |   |                          |                   |

S-5! PRODUCTS ARE PROTECTED BY MULTIPLE U.S. AND FOREIGN PATENTS.  
VISIT OUR WEBSITE AT [WWW.S-5.COM](http://WWW.S-5.COM) FOR COMPLETE INFORMATION ON PATENTS AND TRADEMARKS.