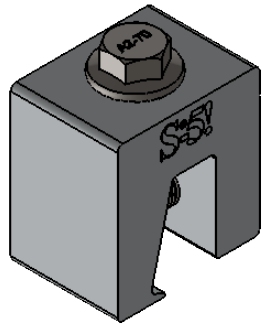
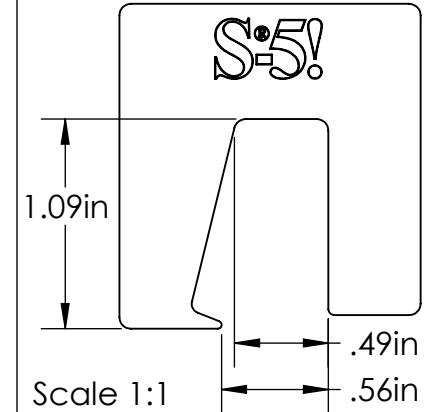
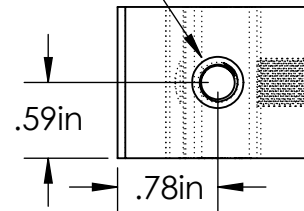


S-5-N Mini

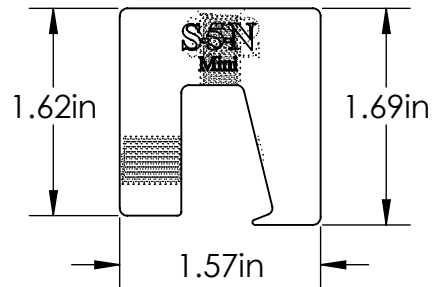


M8-1.25 Threaded Hole

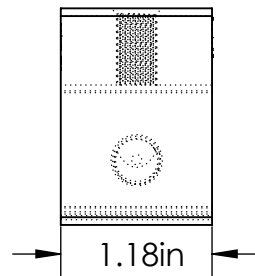
Top



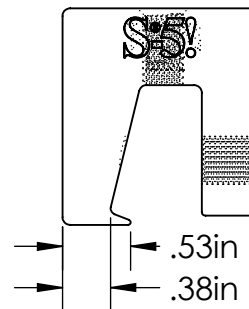
Back



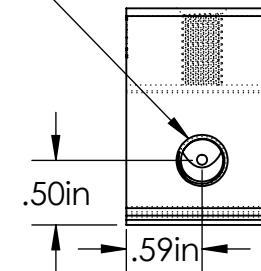
Left



Front



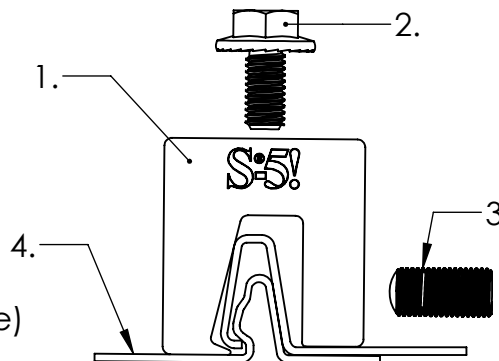
Right



3/8-24 Threaded Hole

General Notes:

1. S-5-N Mini Clamp
2. M8-1.25 SS Hex Flange Bolt (13mm Socket)
3. 3/8-24 SS Round Point Setscrew (3/16 Hex Drive)
4. Example Roof



FOR STANDING SEAM SPECIFIC MECHANICAL LOAD TEST INFORMATION AND CLAMP INSTALLATION INFORMATION PLEASE VISIT: WWW.S-5.COM

MATERIAL: 6061 T6 Al	<div data-bbox="1599 1208 2159 1342">  <div data-bbox="1912 1219 2136 1331"> METAL ROOF INNOVATIONS, LTD. 8655 TABLE BUTTE RD COLORADO SPRINGS, CO 80908 719-495-0518 719-495-0045(FAX) </div> </div>		
EST ASSEMBLY WEIGHT: 0.268 lbs	TITLE S-5-N Mini		
SUPPLIED HARDWARE: M8-1.25 x 16 mm Bolt 3/8-24 x .800" Setscrew	DRAWING NO. N72-A-1-D	DRAWN BY Paul Leitch	DATE 5/12/2017
SCALE: 1:1.5 EST. WEIGHT: Clamp: 0.216 lbs Setscrew: 0.0170 lbs Bolt: 0.0345 lbs	<div data-bbox="1599 1428 2159 1505"> S-5!® PRODUCTS ARE PROTECTED BY MULTIPLE U.S. AND FOREIGN PATENTS. VISIT OUR WEBSITE AT WWW.S-5.COM FOR COMPLETE INFORMATION ON PATENTS AND TRADEMARKS. </div>		