

# How to make the IQ Combiner 5/5C compatible with IQ Battery 3T/10T

June 10, 2023

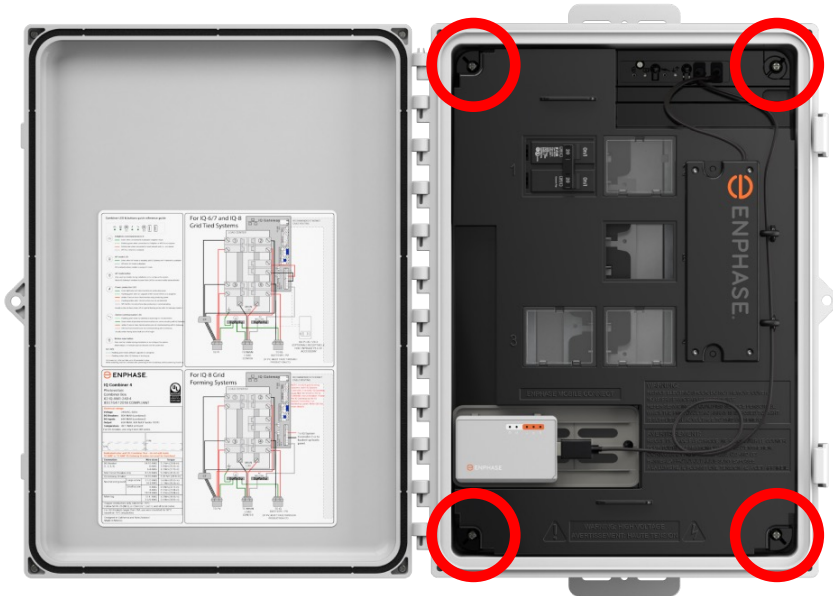
# Step 1: Unplug the Mobile Connect

Unplug the Mobile Connect from the USB port. This must be removed so that the deadfront can be removed.



# Step 2: Unscrew the deadfront

Unscrew the four screws that secure the deadfront. There is one screw in each corner.



# Step 3: Unplug the Communications Kit

Unplug the pre-installed Communications Kit (COMMS-KIT-02). The preinstalled kit will remain in the IQ Combiner. Tuck the cable to the side of the circuit board.

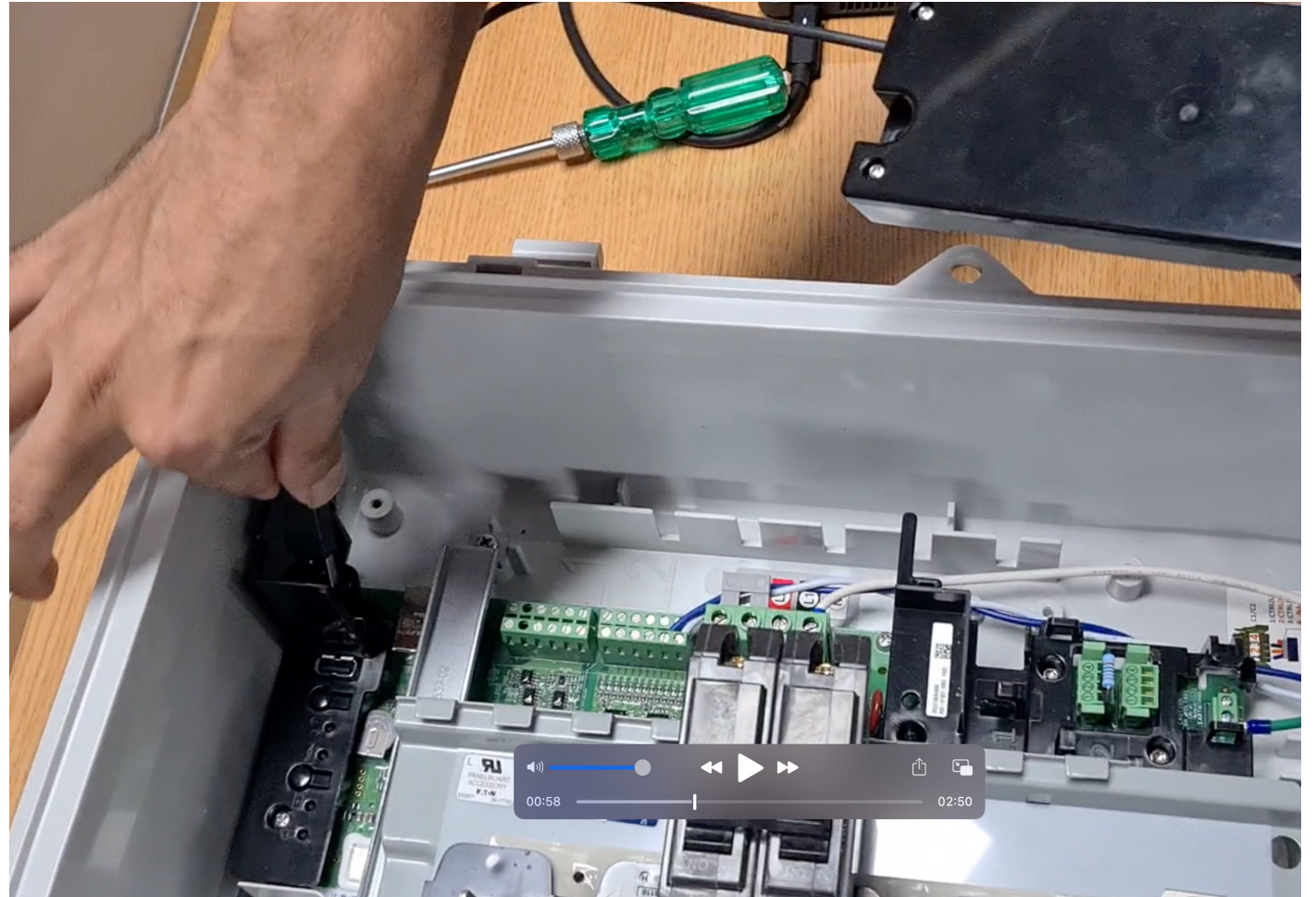




# Step 4: Install the new Communications Kit

Plug the new Communications Kit (COMMS-KIT-01) into the USB port.

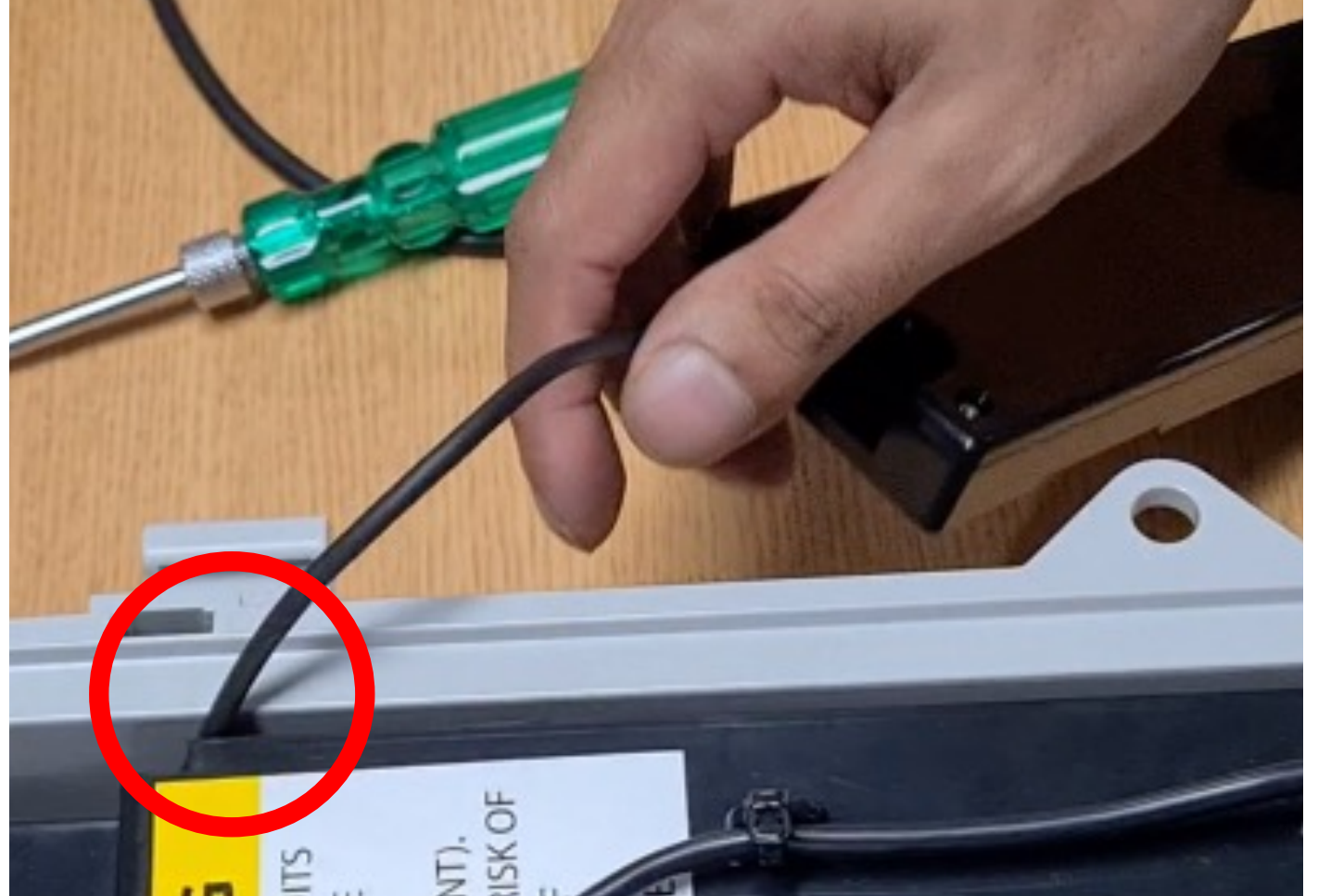
Keep the new Communications Kit on the outside of the enclosure. It must be located on the outside of the deadfront.



# Step 5: Reinstall the deadfront

Reinstall the deadfront using the four screws that were previously removed.

Take care in routing the Communications Kit cable through the gap on the side of the deadfront that is intended for an ethernet cable.



# Step 6: Attach the Communications Kit

Use the double-sided tape located on the back of the Communications Kit to attach it to the surface of the deadfront. Please it firmly to activate the adhesive.





# Step 7: Secure the installation using zip ties

Use the provided zip ties to secure the Communications Kit to the deadfront.

The USB cables for the Communications Kit and Mobile Connect can also be zip tied in place for cable management.





# Revision history

Revision	Date	Description
1.0	June 11, 2023	Initial release



© 2023 Enphase Energy. All rights reserved. Enphase, the "e" logo, IQ, IQ7, IQ7+, IQ7X, IQ7A, IQ8, IQ8+, IQ8M, IQ8A, IQ8D, IQ8H, IQ9, IQ9D, IQ9D-BAT Inverter, IQ Battery, IQ Battery 3T, IQ Gateway, Ensemble, Solargraf Pro, and certain other names and marks are registered trademarks of Enphase Energy, Inc. Other names are for informational purposes and may be trademarks of their respective owners.